

## Architectural System Window & Façade

---

Sliding Folding | Slimline | Tilt Turn | Sliding | Casement  
Fix | Flymash | Louvers | Integrated Blinds | Façade



## :: ABOUT US ::

### WELCOME TO CORINZO WINDOWS

Since 2012 we have manufactured numerous types of windows and doors and as ex-window Installers, we understand what quality needs to look like onsite.

Most of our customers are small to medium size glazing or building companies who need quality aluminium frames at the right price with excellent delivery times and friendly service. We provide the best consultancy in the selection, design, structure as well as type of opening of windows and doors systems. We are popular with strong commitment, best quality product and prompt after sales service in the market of Aluminium System Windows and Doors. We drive our company on European Standards and Modern Technology at every stage of the production process. We are highly conscious about the comfort of our clients, customers, and associate European market. We have an experience center to bring clients very close to the actual product and explain the quality of product they are going to choose for their property.

Corinzo is an adaptable system with exceptionally slim sections, excellent performance and a high-quality finish. Every individual window or door is a customized product, tailored to your precise specification and needs, but every part of the range delivers on the Corinzo Promise.



## WHY CORINZO?

- Unlimited Design Options
- Choose the Finer Details
- Aluminium is Long-Lasting
- Slim Sightlines for the Best Views
- Glass Options for Aluminium Windows
- Aluminium Windows are Energy Efficient
- Aluminium Windows are Strong & Secure
- An ideal sliding window option for big height and large dimensions of window opening.



Cost effective



Noise Reduction



Long Lasting &  
Low maintenance



More Colour  
Choice



Built For Extreme  
Weather Conditions



Water  
Tightness

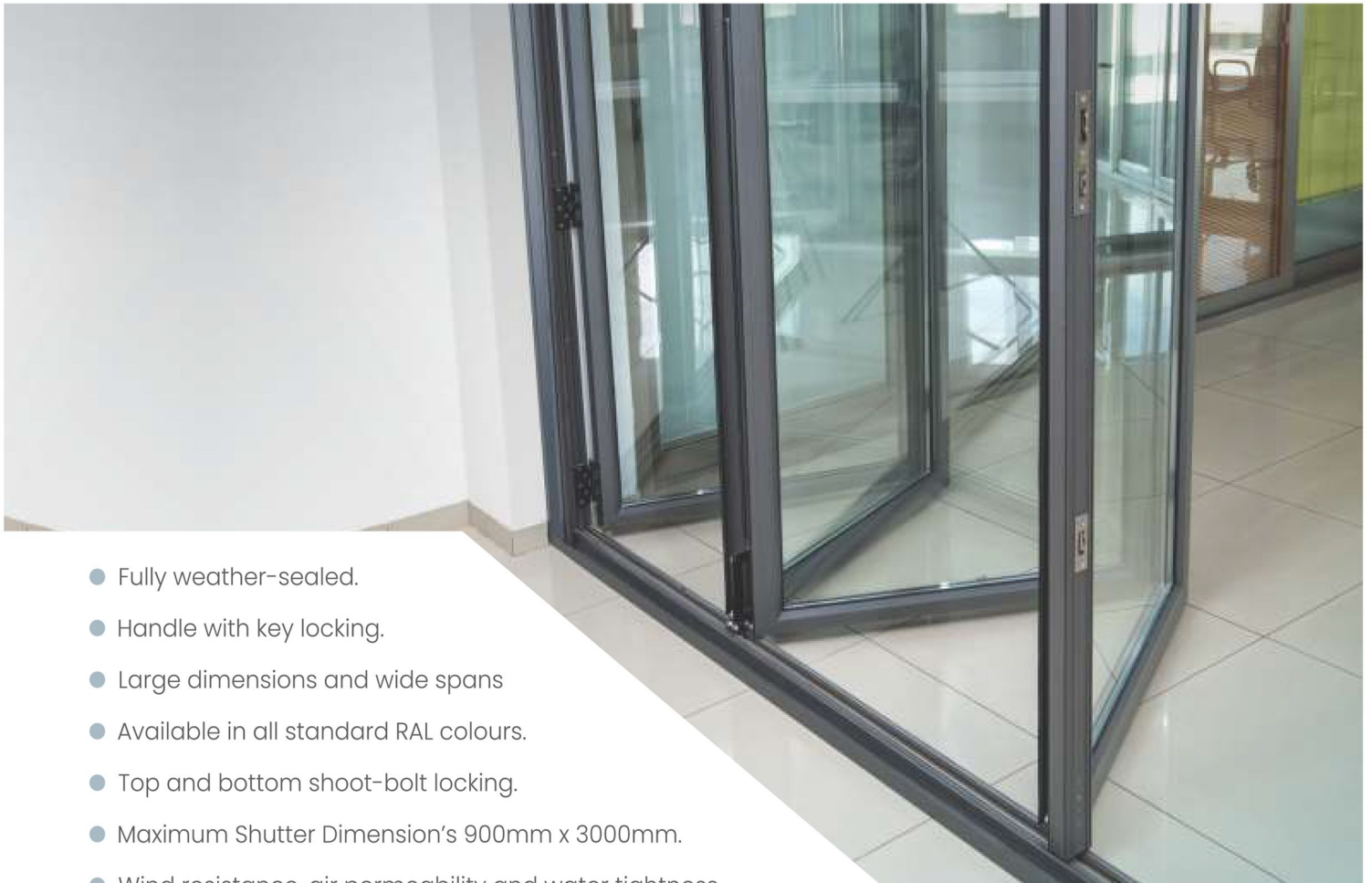


100% Recyclable



Save Energy

## SERIO BI-FOLD SYSTEM



- Fully weather-sealed.
- Handle with key locking.
- Large dimensions and wide spans
- Available in all standard RAL colours.
- Top and bottom shoot-bolt locking.
- Maximum Shutter Dimension's 900mm x 3000mm.
- Wind resistance, air permeability and water tightness
- Sturdy structure with the flawless and long-lasting operation
- The ideal sizes are up to 7.5m in width, and up to 3m in height.
- Use in commercial & Residential application where heavy usage is expected.
- Stainless steel wheel sitting on a steel track which give a smooth opening action.
- Toughened glass or laminated safety glass or DGU with Integrated blinds in a wide range of colors can work better in this type of door.

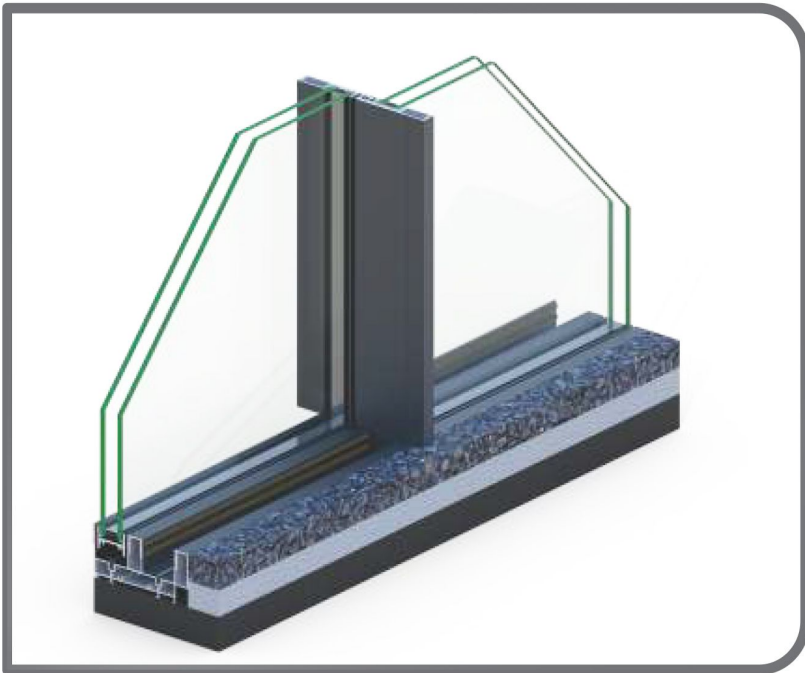


Satin Chrome Bright Chrome Gold Stainless Steel White Black

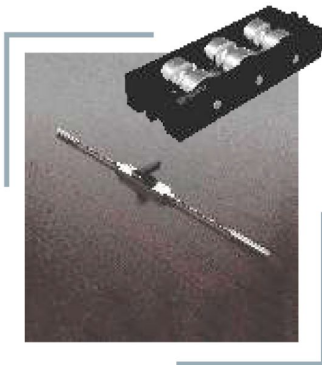
### Testing Parameter

Summary of testing procedure	Result		
	Test Standard	Classification Standard	Test Standard
Air permeability	BS EN 1026:2000	BS EN 12207:2000	600Pa (Class 4)
Watertightness	BS EN 1027:2000	BS EN 12208:2000	600Pa (Class 9A)
Wind resistance	BS EN 12211:2000	BS EN 12210:2000	1200 Pa (Class A2)
Exposure category		BS 6375:Part 1:2009	1200

## ULTRA SLIM SYSTEM



- Highest Aesthetic looks
- Extremely Energy Efficient
- Effortless smooth sliding action
- Long lasting & Highly functional
- Ultraslim Systems are extraordinary systems for Large Openings
- Maintenance free & Structural Bonding & Maximum Safety & Security
- Single double and triple glazed can work better in this type of door



<b>U Value</b> $1.5W/m^2K$	<b>Document L</b> 	<b>Sightline</b> 20mm
<b>Air</b> 600Pa	<b>Water</b> 600Pa	<b>Wind</b> 1200Pa



## MINI MINIMAL SYSTEM



- Single and double glazed options
- Multiple Loking options
- Thinnest sight lines of 20 mm
- Accessory system: High quality accessories achieved European standard.
- various colors for choice.
- Durable, no deformation, no crack after long-time usage.
- waterproof and soundproof window system
- No maintenance required

## PORTON SYSTEM

- Strengthening Your Window at Fullest
- 45 degree joint in frame & 90 degree joining for shutters
- Maximum Shutter Dimension's 1500mm x 3600mm
- Central Reinforcement choices in rectangular and aerodynamic shapes for high wind load and larger height window /door applications
- Siliconised EPDM U glazing gaskets for excellent air and water tightness
- Nylon double fin shutterpile for protection against dust ingress
- Rollers with heavy load bearing capacity (upto 250 Kg per shutter) for smooth operation



## VENSTER SYSTEM



- Slim Frame with 90 degree joining
- Varieties of shutter combinations are also possible
- An ideal sliding window option for big height and large dimensions of window opening
- Multiple tracks possible due to inclusion of monotrack frame
- Maximum Shutter Dimension's 1500mm x 3000mm.
- High on aesthetics, smart in design and excellent on all performance parameters of a sliding window

- Powder, PVDF and Wooden finish coating for Windows to create best aesthetic combination with surrounding interior / exterior design

## TOSCA SYSTEM



- High security level
- Special hotels solutions
- Wide variety of typologies
- Exceptional sound insulation
- Ideal for extremely wide spans
- High energy savings thanks to exceptional energy efficiency
- Maximum ease of use and high functionality
- Increased static loads and functionality in case of severe weather conditions
- Maximum Shutter Dimension's 1200mm x 2400mm

- A wide range of aluminum profiles & array of central mullions to choose as per wind load conditions
- Wider track and deeper gutter for water drainage and easy maintenance
- Theft guard provided against the lifting of the shutter from outside
- Single/Multiple point locking option with 1/2/3/4 Locking Commands
- Sleek design with 27 mm visible width in the center, yet very strong in 2 or 3 track option windows
- 45 degree joint in frame & 90 degree joining for shutters
- Maximum Shutter Dimension's 1500mm x 3000mm

## RENZO SYSTEM



## FENSTER SYSTEM



- Infill glass can be single or double glazed (thickness can vary from 5 to 20 mm).
- Rails in anodized aluminum or stainless steel option
- Excellent insulation and noise reduction
- Central Reinforcement choices in rectangular and aerodynamic shapes for high wind load and larger height window /door applications.
- Slim Interlock of 20mm that gives an uninterrupted view of the world outside
- Maximum Shutter Dimension's 1200mm x 2400mm

## NAUTICA SYSTEM

- Designer looks available for creative looks
- Its adjustable rollers can carry up to 120kgs per sash
- 5 or 6 single glass options
- Sleek Design for best visibility
- Each hardware is designed to be compatible with the system
- Affordable prices with best Quality & Service
- Maximum Shutter Dimension's 900mm x 1800mm
- Slim Interlock of 20mm that gives an uninterrupted view of the world outside





## JABRON CASMENT SYSTEM

- available in single & double glazing  
5,6,12,24 and 32 mm
- Options for single/double shutter and  
Openable fix Openable for window  
series
- Two point locking available complete  
air and water tightness
- Profiles compatible for Euro groove  
hardware
- EPDM for longer life of window  
gaskets
- Corner joints possible with the help of  
spring loaded corner cleat
- Heavier section is suitable for bigger  
size windows
- Special heavy and light duty butt hinges for carrying capacity



## JABRON TILTTURN SYSTEM



- saving space
- Protecting your home  
from rain
- Allowing draft-free  
ventilation
- Perfect for sunlight  
penetration
- Tilt and turn windows  
are a must-have  
for your homes
- Maximum window  
shutter dimensions  
600 mm x 1500 mm

- Our windows offer protection from wind, air, water, noise, and sound disturbances
- Use of Double glass (DGU) can be considered to achieve higher sound and heat insulation

## JABRON DOOR SYSTEM



- System Window Series based on European groove (EG) design
- Maximum window shutter dimensions 900 mm x 2700 mm
- Glazing options: 8mm, 12mm, 20mm, 24mm and 32mm
- Possibility to fit mortise lock with cylinder and spring loaded handle for doors
- Multiple-point locking available for security, complete air and water tightness.
- Large window openings up to 2700mm in height possible – more uninterrupted view to the outside

- Well designed drainage system ("Z" drainage) thus no accumulation of water between tracks which is suitable for windows in high rise buildings

## JAYRO CASEMENT SYSTEM

- Wide variety of typologies
- Single or Double glass options
- Effortless smooth opening action
- Ease of use and high functionality
- Exceptional quality with certified performances
- Maximum Shutter Dimension's 600mm x 1500mm
- EPDM Gasket for Air and Water tightness with Longer Life
- Shutter load up to 75kgs for smooth trouble free operation
- the second most energy-efficient, after fixed-pane windows
- Increased static loads and functionality against extreme weather conditions
- Differentiating in the market through the high-end systems, following the modern architectural trends
- During the winter months, the heat from the sun helps warm the room. Using a natural source of heat reduces heating costs



## PLEATED MESH



- Maintenance free can be easily cleaned
- Barrier free is a pleated design from Germany with user friendly feature at the bottom for easy access
- Pleated Mesh Elite is a patent design from Germany which is detachable & can take high wind pressure
- These Fly Screens are ideal for tilt & turn windows, casement windows & bifold doors and also for large Balcony doors

- Space saving
- Hygienic-no dirt or bacteria build up
- Control privacy with the magnetic tilter
- Ideal choice for Offices, Homes, Hospitals, Hotels, etc
- Motorized operating system  
( Tilt / Turn & Lift the blinds Remotely )
- Energy efficiency & acoustic properties to providing privacy & thermal protection

## GEORGIAN BAR



- European Window Design
- The size comes in 18x8mm
- Gives fabulous western touch to common windows
- The End corner key closes the aluminum Georgian bar
- It is dustproof, rustproof, preventing color ageing
- The product has a distinct advantage of being easily cleaned & economical to purchase

## INTEGRATED BLINDS





## CORINZO SYSTEM Window and Facade

Aluminium  
**Sliding  
Folding**  
*System*



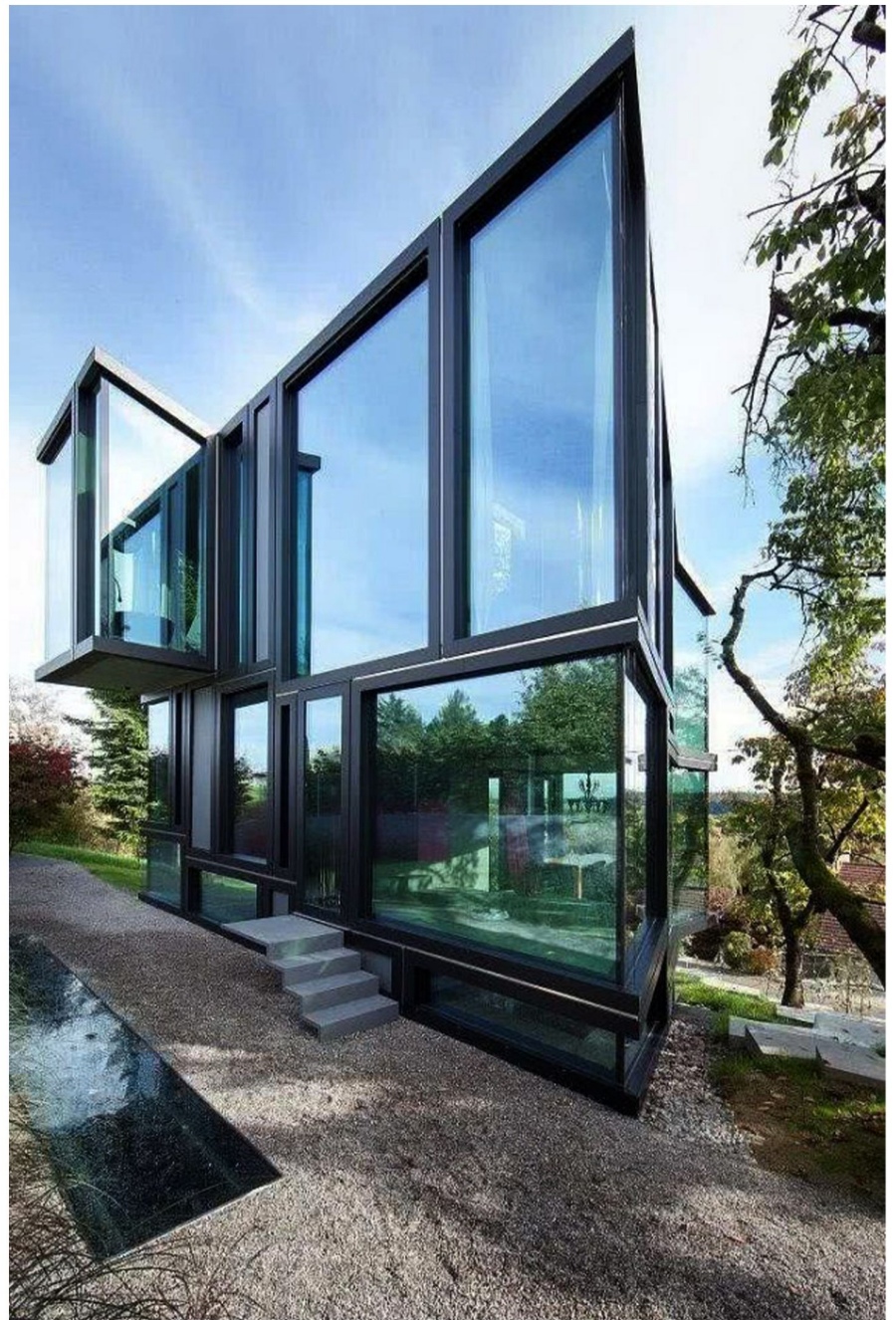
**Manufacturer & Exporter**

Sliding Folding | Slimline | Tilt Turn | Sliding | Casement

Fix | Flymesh | Louvers | Integrated Blinds | Façade



**CORINZO**<sup>TM</sup>  
CORINZO SYSTEM WINDOW AND FACADE



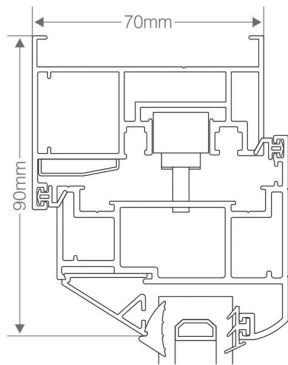


## SERIO BI-FOLD SYSTEM

### Product Description

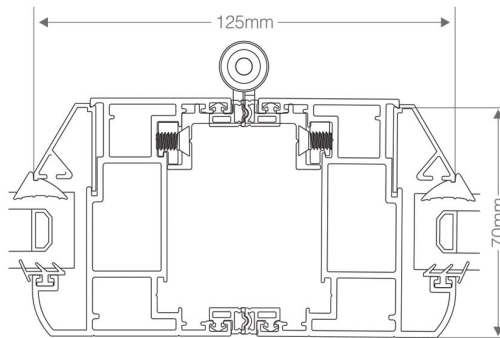
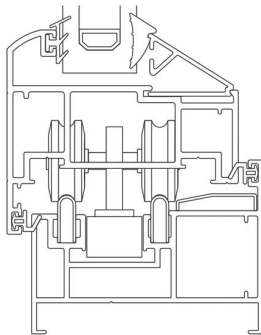
- The Serio Fold is a versatile and flexible, non thermal broken folding Door System, available in a wide range of configurations to create the look you desire.
- Multiple Doors can be combined with open-in or open-out options, in a variety of styles to create a wide expanse of opening. The narrow profile ensures that maximum glazing is achieved, flooding rooms with light.
- The Serio Fold series of Sliding-folding doors offer impressive opening apertures that can unite internal and external areas creating unique living and social areas. Suitable for both Residential and Commercial applications.
- Our system combine the strength and light weight properties of Aluminium form and function of the highest standard. Reliability and security are key drives in the design of any sliding or folding door system. Vision Fold systems have been rigorously tried and tested to exceed many standards and are certified under the Secured by Design' scheme for security and exceed severe exposure categories for weather tightness.
- Architects and designees appreciate these Bi-Fold windows and doors not only for its extreme versatility in transforming spaces, but also for its high quality performances and its easy pliability to and technical need.



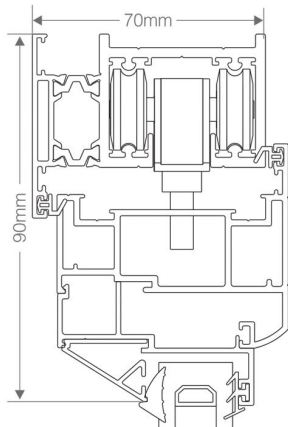


Dimensions

Frame Width	90mm
Frame Depth	70mm
Glass	28mm DGU or 35mm DGU with blinds
Typical Sight Line	125mm
Max o/a Height	3000mm
Max o/a Width	900mm
Max Sash Weight	80kg

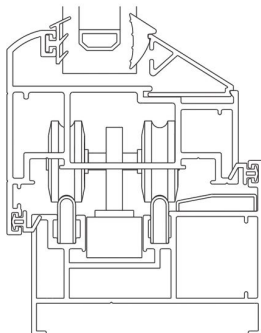


Top Hung with Bottom Roller



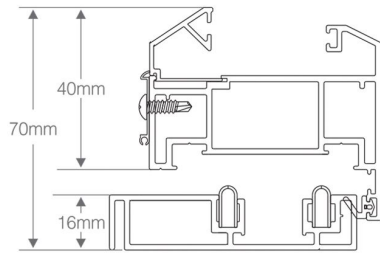
Dimensions

Frame Width	90mm
Frame Depth	70mm
Glass	28mm DGU or 35mm DGU with blinds
Typical Sight Line	125mm
Max o/a Height	3000mm
Max o/a Width	1200mm
Max Sash Weight	150kg



<b>U Value</b> 1.5W/m <sup>2</sup> K 	<b>Document L</b> 	<b>Sightline</b> 125mm 
<b>Air</b> 600Pa 	<b>Water</b> 600Pa 	<b>Wind</b> 1200Pa 





## Dimensions

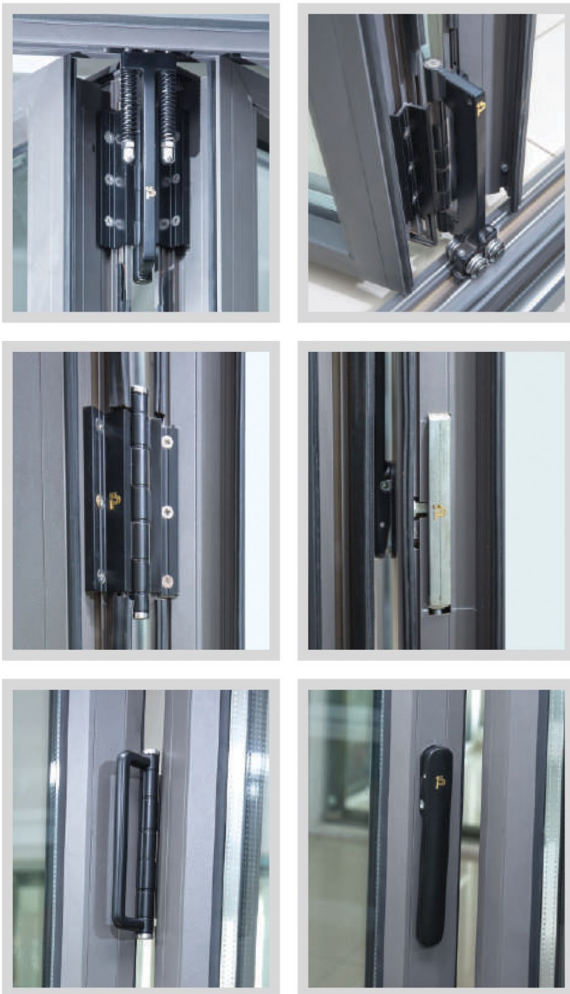
Frame Width	90mm
Frame Depth	70mm
Glass	28mm DGU or 35mm DGU with blinds
Typical Sight Line	125mm
Max o/a Height	3000mm
Max o/a Width	900mm
Max Sash Weight	80kg

## Application

Residential/Retail / Commercial - Robast use.

## Design Features

- 70mm Frame Depth (Slim Profiles for large glass area)
- Narrow Profile offering minimum sight lines 42mm interlock.
- Wrap around glazing.
- Heavy duty sliding folding door suitable for use in commercial application where heavy usage is expected.
- Four stainless steel wheels in bottom & four on top ensures larger door size smooth and consistent operation.
- Inor Out opening.
- Optional top hang roller.
- Three point hook locking.
- Low threshold option available.
- Anti-finger trapping gasket.
- Available in all standard RAL colours.
- Designed to BS6375 (weather testing).
- Shootbolt at interval points. Handle with key locking.
- Serio fold is an ideal choice for applications that required large or runs of multiple sashes.
- Sashes slide on Four stainless steel wheel sitting on a steel track which give a smooth opening action.

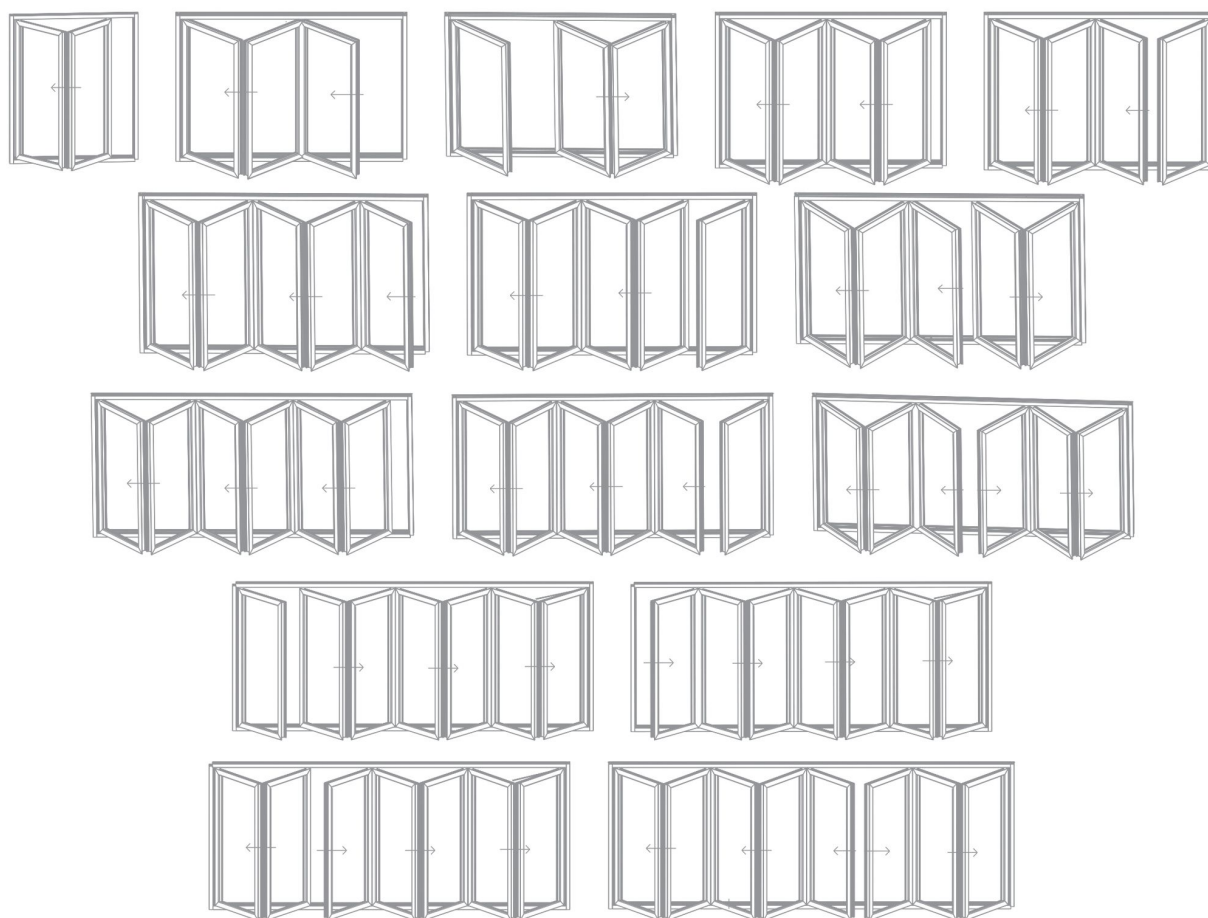


## Testing Parameter

Summary of testing procedure	Result		
	Test Standard	Classification Standard	Test Standard
Air permeability	BS EN 1026:2000	BS EN 12207:2000	600Pa (Class 4)
Watertightness	BS EN 1027:2000	BS EN 12208:2000	600Pa (Class 9A)
Wind resistance	BS EN 12211:2000	BS EN 12210:2000	1200 Pa (Class A2)
Exposure category		BS 6375:Part 1:2009	1200



The Typologies Shown Folding Towards The Inside and Outside Opening is Also Possible.



### Top Roller with Bottom Roller



The test method followed the principle of Annex D of BS EN 1191 : 2012

#### Features & Benefits:

- 10000 cycle tested with installed door. (buildcheck, UK)
- Stainless Steel 304 rollers with zero tolerance.
- 150kg weight capacity of door panel. (buildcheck, UK)
- High quality needle roller bearings. (Germany)
- Stainless Steel 304 strong and corrosion resistance cast construction.
- One piece design of roller body, maintenance free and non breakable.
- Black, White & Silver colour powder coating.
- Fewer components than competitor rollers and hinges.



## Serio Fold Handle

### Features & Benefits:

- Premium Product.
- Can be used without the requirement for additional "D" handles.
- No visible screw in the closed or open positions.
- Side entry lock mechanism avoids key damage to door
- Available in different Colors/Finishes.
- Special Colors/Finishes possible.
- Non standard key for better safety.
- 13mm deep base-plate option.
- Non-locking options.
- Supportive for Aluminium, Timber or PVCu sliding folding doors.

## Serio Fold Gear Box

### Features & Benefits:

- Premium product.
- Top and bottom shootbolt lock.
- 20000 cycle tested.
- Specially for sliding folding doors.
- 280 hr salt spray tested zinc passivation.
- Most slimmer design for slim line profiles

### Back - Plate Option :



Cylinder Locking



Satin Chrome    Bright Chrome    Gold    Stainless Steel    White    Black

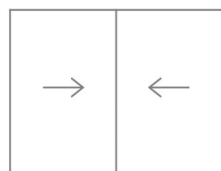


This marvelously designed slim series is the ideal solution for sliding doors which require aesthetic performance & functionality. This series has been elaborated aiming to meet highest standards in elegance, comfort, and performance. The interlocking profiles add a lot of glamour to this window system.

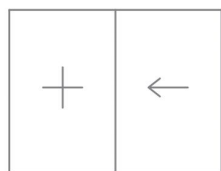
This series made for high-performance, aluminium can endure heavy loads & ensures safety even when subjected to severe weather condition.

This high wind resisting contrives makes it the ideal choice for sliding doors required for high rise residential buildings.

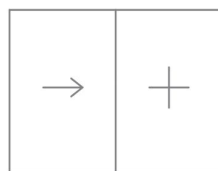
## System Typology



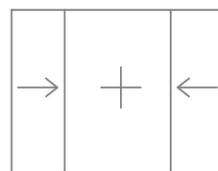
2-TRACK 2-SHUTTER



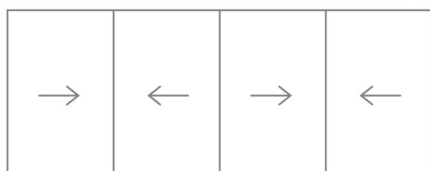
2-TRACK 2-SHUTTER



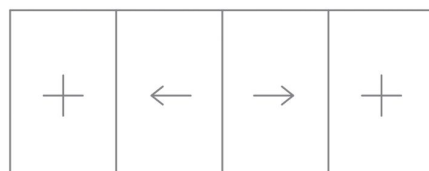
2-TRACK 2-SHUTTER



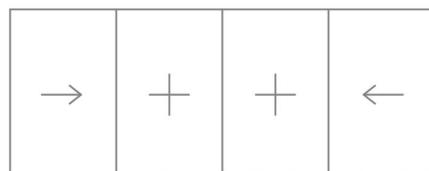
2-TRACK 3-SHUTTER



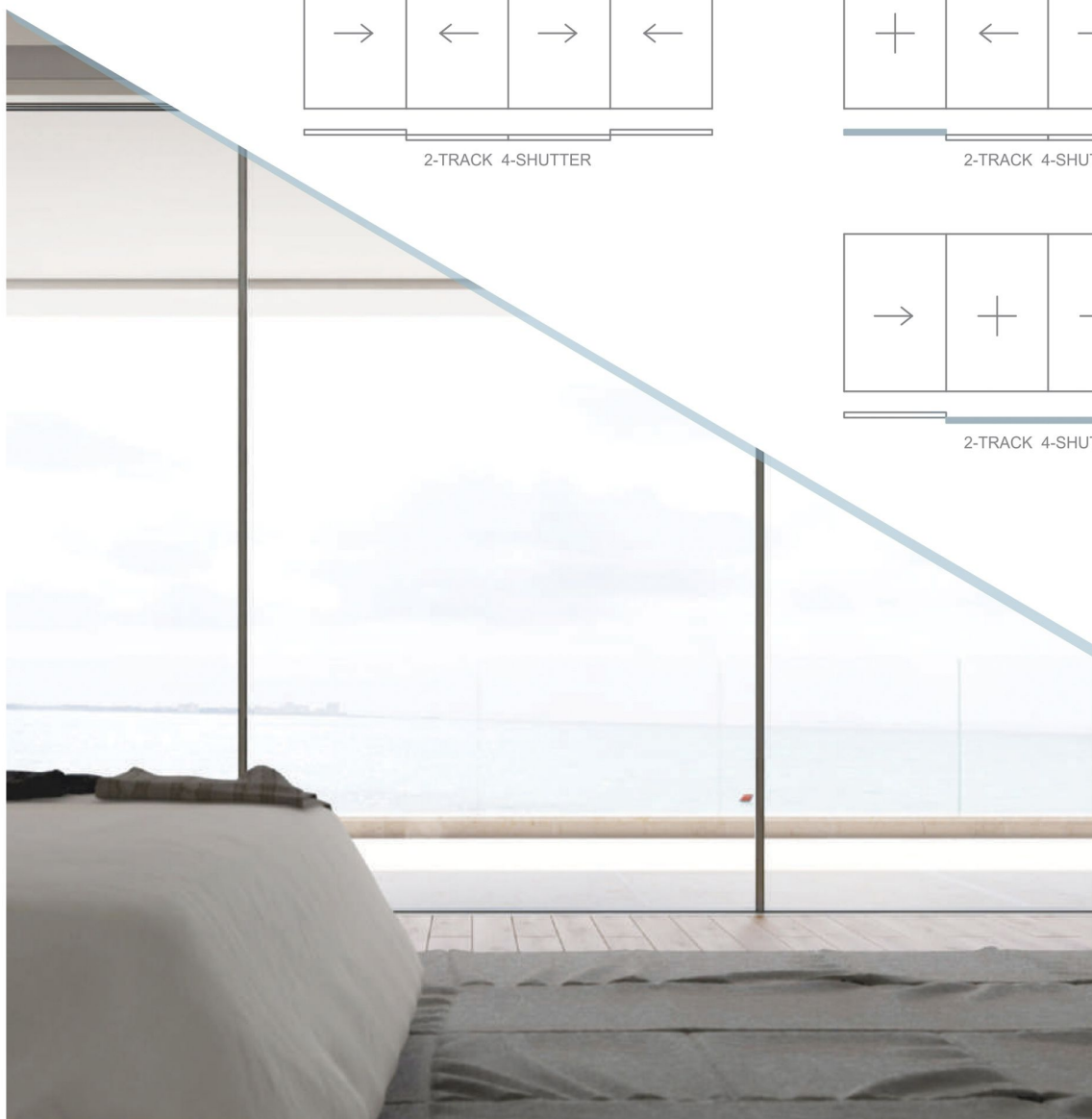
2-TRACK 4-SHUTTER



2-TRACK 4-SHUTTER



2-TRACK 4-SHUTTER

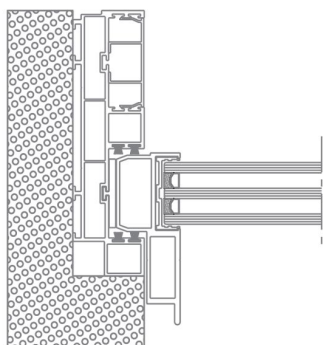


## Technical Characteristics

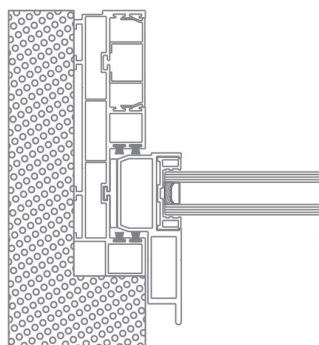
Top & Bottom Frame Height	68mm
Left & Right Frame Height	43mm
Frame Width	154mm
Interlocking Profile Width	20mm
Roller Weight Capacity	500 Kg / pair
Glass Thickness	36mm / 25mm / 12mm
Max Shutter Height	3660mm
Hidden Frame	Possible

## Possibility of Glass

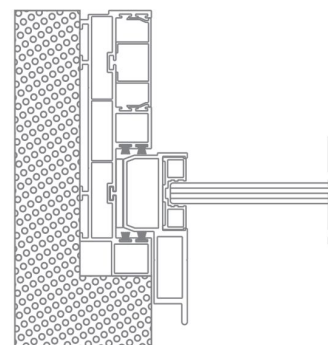
- This minimal system is intended to be flexible for 36mm, 25mm & 12mm glass.
- No need to change interlock section and handle section for different glass, By only changing glass adaptor section and top bottom section we can use any of the glass.



Triple Glazing 36mm



Double Glazing 25mm



Single Glazing 12mm

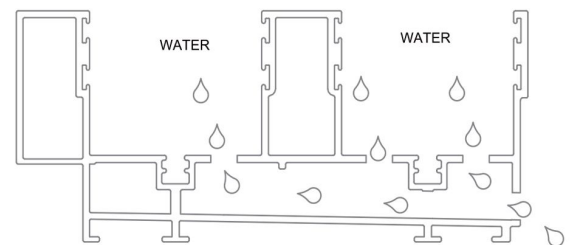
## Hardware Functionality & Credibility

- Stainless Steel 304 grade Corrosion Resistance Rollers with German Bearing can carry Heaviest Load of the each Shutter as maximum Capacity of 500 Kg. Pair.
- High Strength Shoot bolt locking System with gear box can operate Very Smooth Locking with Highest Security.
- Other Plastic Accessories use for better and Smooth Function of Window with Complete Solution.



## System Functionality & Credibility

- Easy replacement without removing locking mechanism and interlocking section during glass breakage.
- Fully bottom hidden concept possible.
- Very easy to use, install & replace.
- The water drainage is achieved through specific perforations through the bottom frame.
- Drain Cover cap with Flipper use for easy water out but Restrict the Air, Dust and insects.

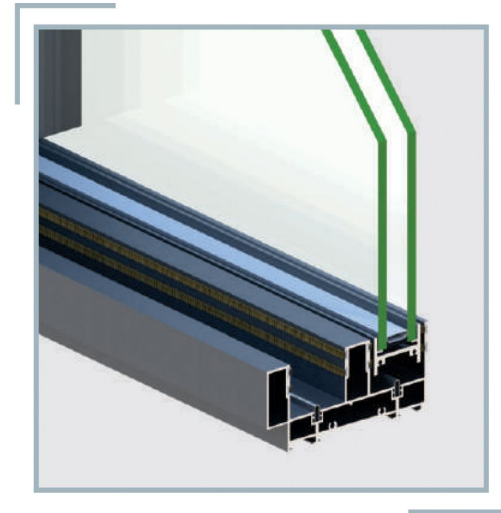


WATER FLOW OUT DIAGRAM

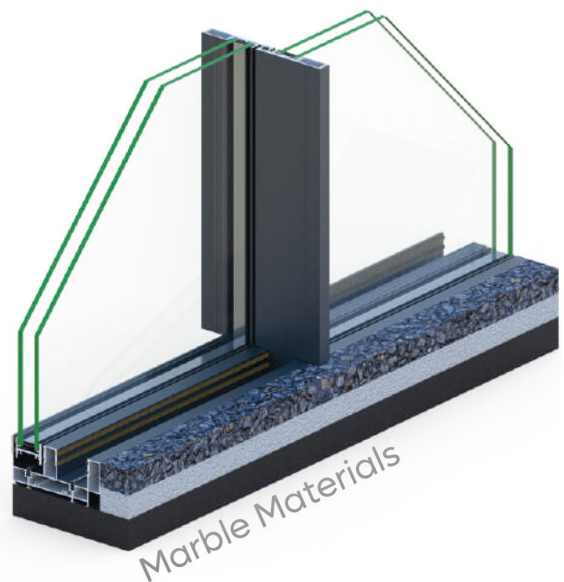
Water Outlet



## System Advantages



- Highest Aesthetic looks
- Extremely Energy Efficient
- Effortless smooth sliding action
- Long lasting & Highly functional
- Ultraslim Systems are extraordinary systems for Large Openings
- Can be used in High-end Villas, FarmHouses, Luxury Resorts and many more
- Maximum Shutter Dimension's 1800mm x 3600mm
- Ultraslim Systems are Systems without any obstructions on the floor
- Maintenance free & Structural Bonding & Maximum Safety & Security
- Single double and triple glazed can work better in this type of door
- Enhanced natural light thanks to the system's minimal design and the wide glazing surfaces





# WHY CORINZO?



**One –stop–shop solution for design sourcing finishing and delivery of aluminium windows, doors & Façade**

- Our window and doors are cost efficient, saving your money on energy and gas, and increasing the resale value of your property.
- We are specializing in making windows and door design solution to your needs.
- We ensure long durability of our product and provide warranty in written.
- Our locking system and quality of material enhance the security factor of your property.
- A smooth operation of windows and doors prevent mental disturbance and provides the complete peace inside your campus
- The heavy duty mosquito net will protect your house against mosquito and various other insect also.
- Specification noise reduction elizing confrigution can be created to suit almost any requirement.
- Our products do not require any maintenance apart from cleaning.
- Any size and design are possible, we have an extensive range of windows and doors.
- Hardware and accessories are well designed and tested for best performance.
- We offer a choice of more than 400 RAL colours : glossy ,matt, metallic , anodized or wood finish.
- Our aluminium sections have minimum sightline to ensure maximum daylight in your property .
- Resist atmosphere pollution & chemical corrosion.





# WOOD FINISH



## POWDER COATING



## Anodize Blasting Coating





 **Office :**

No 1473/1103, Ward No 13,  
kishan Circle, Ramu ka  
Bass, SIKAR (Raj.) 332001

 **Factory :**

No 1473/1103, Ward No 13,  
kishan Circle, Ramu ka  
Bass, SIKAR (Raj.) 332001

**:: Contact Us ::**

 +91 - 9851518451

 +91 - 9610515451

Follow us



 [info@corinzo.com](mailto:info@corinzo.com)

 [www.corinzo.com](http://www.corinzo.com)